

Tzu Chi's Responses to Covid-19 Pandemic

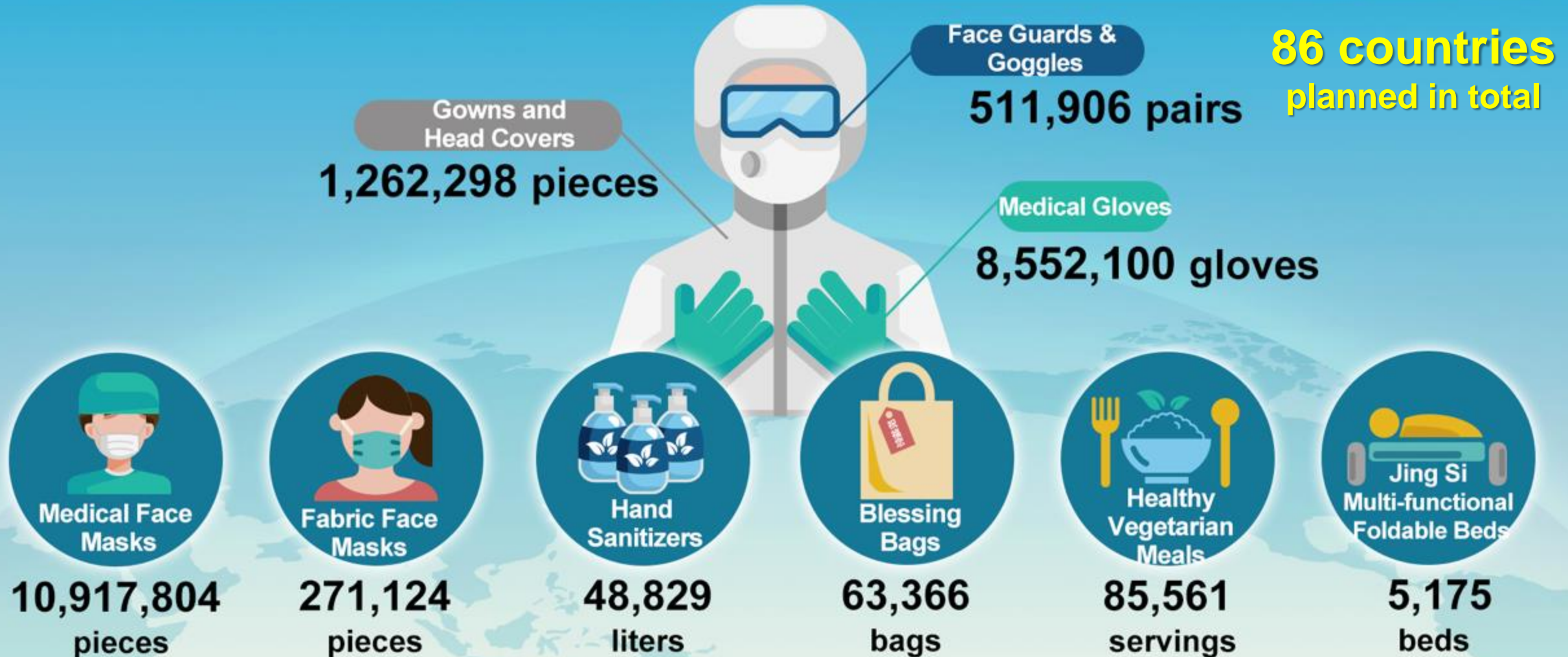


CEO Powen Yen
Tzu Chi Charity Foundation



Together We Help

As of July 28, 2020, Tzu Chi volunteers around the world have mobilized to fight COVID-19. They have been providing protective gear and other materials to 78 countries/regions.



Collaboration Thru Global Partnership

■ Public sector

- ☞ Health care depts
- ☞ Frontline responders
- ☞ Epidemic prevention workers

■ Private sector

- ☞ PPE factories
- ☞ Logistics companies
- ☞ Enterprise CSR

■ Faith-based org.

- ☞ Vatican city pharmacy
- ☞ Catholic San Camillo
- ☞ Caritas
- ☞ Mother Terresa House

■ UN & NGO

- ☞ UNHCR
- ☞ MDM
- ☞ Red Cross

Factors of PPE Support Priority

- **Seriousness of local infection**
- **Level of shortage on PPE**
- **Request for Tzu Chi's help**
- **Tzu Chi volunteer's accessibility**
- **Risk on AML and Anti-terrorist**

Challenges on PPE Support

■ PPE Purchase

- ☞ Material spec. confirmation
- ☞ Time to check supplier's credibility
- ☞ Material price in competing with governmental org.
- ☞ Cash transaction requirement at last minute

■ PPE Delivery

- ☞ Transportation insecurity by lockdown/airline com.
- ☞ Volunteer availability for clearance & inland delivery

■ Political reason

- ☞ Rejection of PPE by certain countries/faith org.

Lessons Learned & Suggestions

- Global partnership, mobilization, and cooperation
- Information transparency and communication efficiency
- Global public/private resources collection, integration, and distribution
- Faith organization's role/influence on separatism and xenophobia

Five Ways of Epidemic Prevention

**Provide relief
to the most
vulnerable**

**Education on
epidemic
prevention**

**Procure and
provide PPE
where needed**

**Go
Vegetarian**

**Pray with
sincere piety**

How The CoronaVirus Leads Us To A Vegan World

Vegan, the answer for all

A clever person solves the problem.

A wise person avoids it.

— Albert Einstein