



KINGDOM OF ESWATINI MINISTRY OF HEALTH



Corona Virus Disease (COVID-19) Situational Report

Report No.152 Date of Issue 16th August, 2020, 19:00 GMT

HIGHLIGHTS

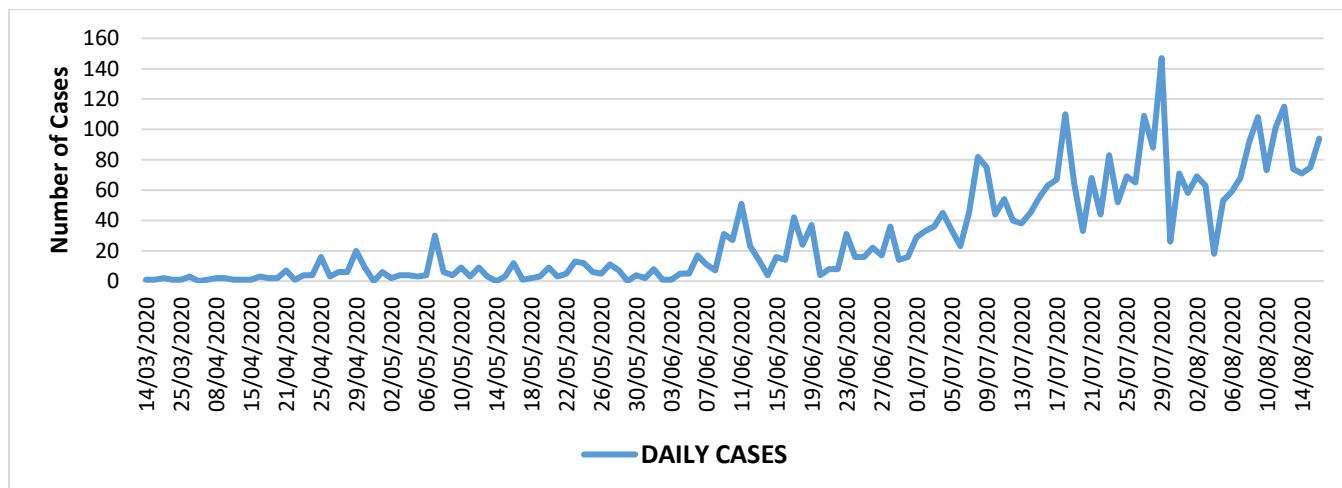
- As of 16th August 2020, there were 3839 confirmed COVID-19 cases, 70 deaths and 2268 recoveries in Eswatini.
- 94 COVID-19 cases and 0 recoveries were reported in the last 24 hours.
- 59% of reported COVID-19 cases have recovered.
- The new cases are from all the regions.
- In the last 24 hours, 510 COVID-19 tests were conducted. Positivity rate was 18%.

New	Confirmed	94
	Recoveries	0
	Deaths	1
Cumulative	Confirmed	3839
	Recoveries	2268
	Deaths	70
Case fatality rate		1.8%

Summary of COVID-19 Cases in Eswatini as at 16th August, 2020

Region	New cases	Cumulative confirmed cases	Cumulative deaths	Case fatality rate (%)
Manzini	47	1743	38	2.3
Hhohho	31	1538	26	1.7
Lubombo	1	264	0	0
Shiselweni	15	294	6	2.2
National	94	3839	70	1.8

Confirmed cases by day

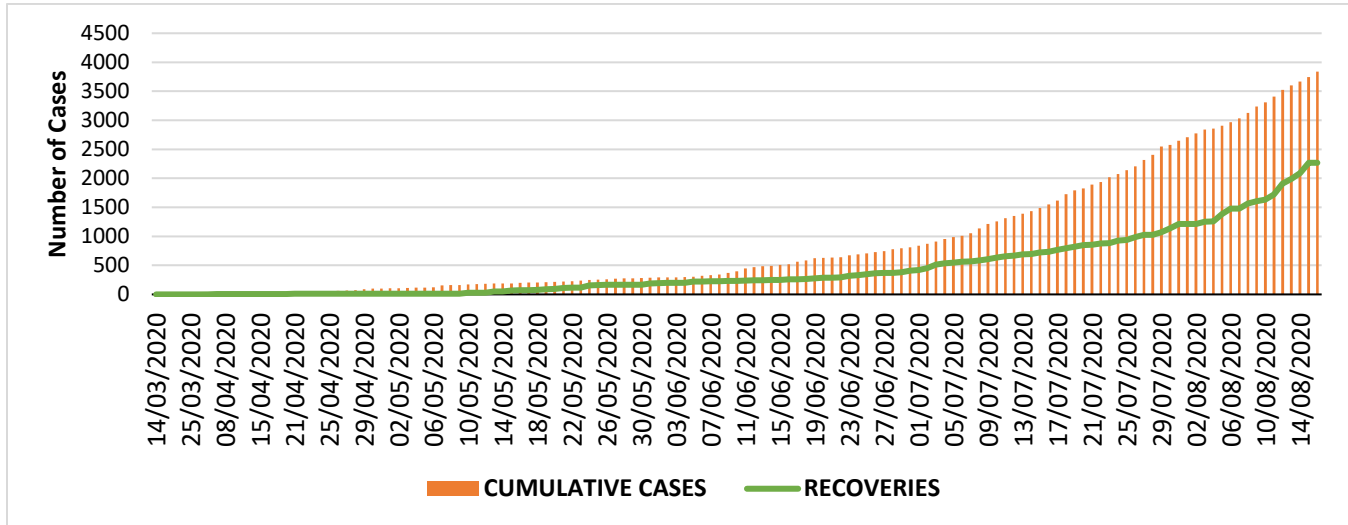




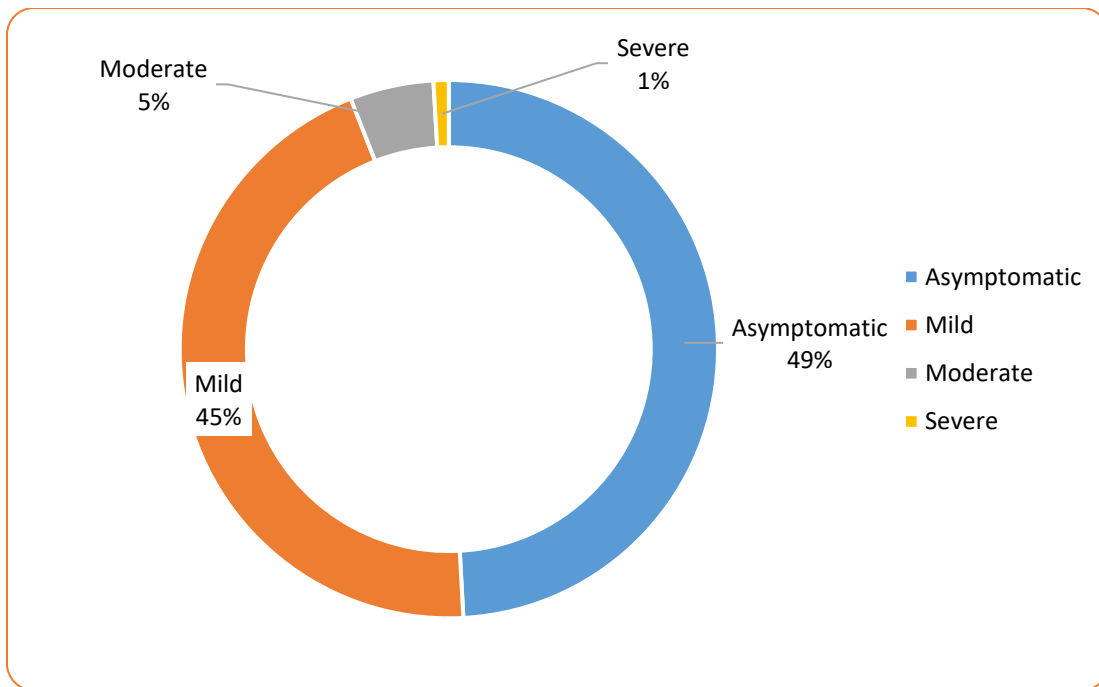
KINGDOM OF ESWATINI MINISTRY OF HEALTH



Cumulative confirmed cases and recoveries



Distribution of confirmed cases by severity at diagnosis

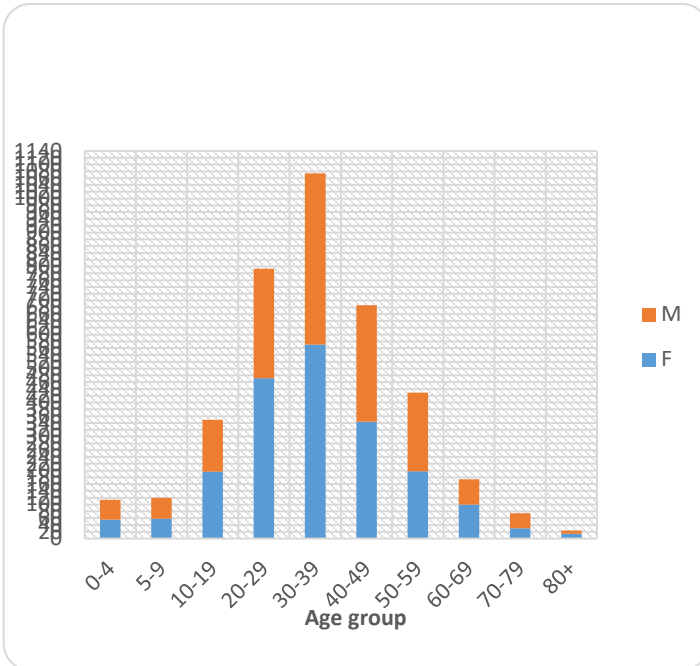




KINGDOM OF ESWATINI MINISTRY OF HEALTH

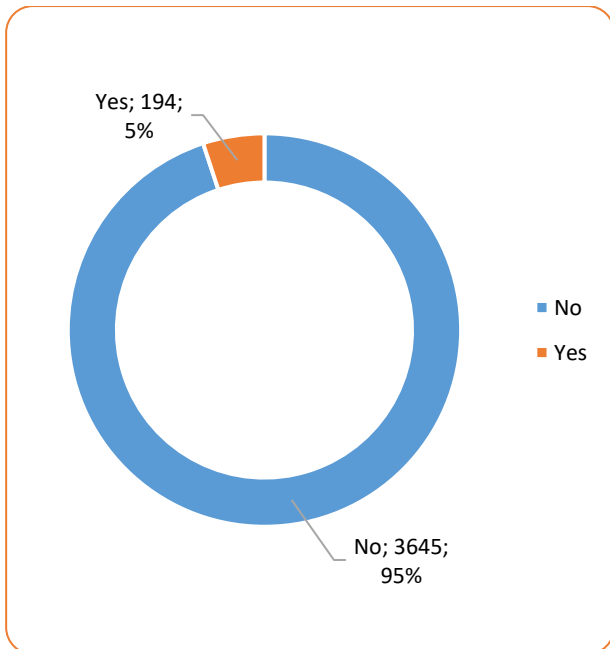


Age-sex distribution of Covid-19 Cases

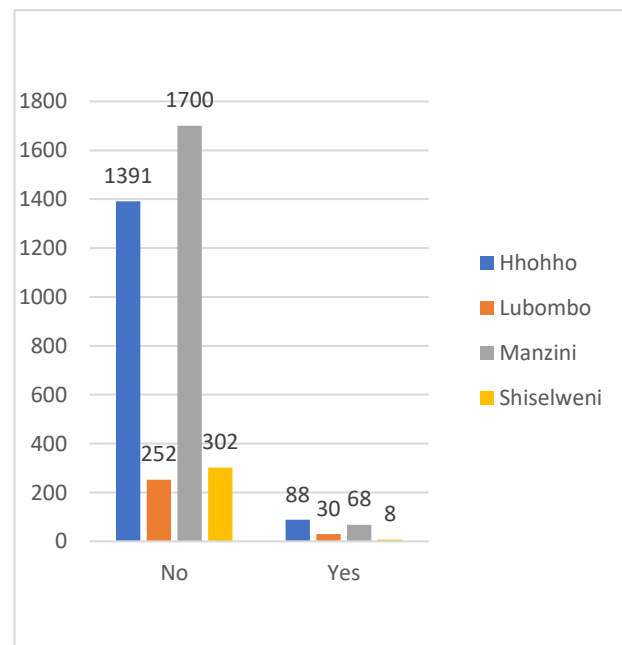


- Mean age is 35 years (SD 15.9).
- 53% of the cases are females, 47% are males
- Most (29%) of the confirmed cases are aged **30-39 years**
- 3% of the cases are children aged <5years

Distribution of cases by HCW and non-HCW



Distribution of HCW and non-HCW by region

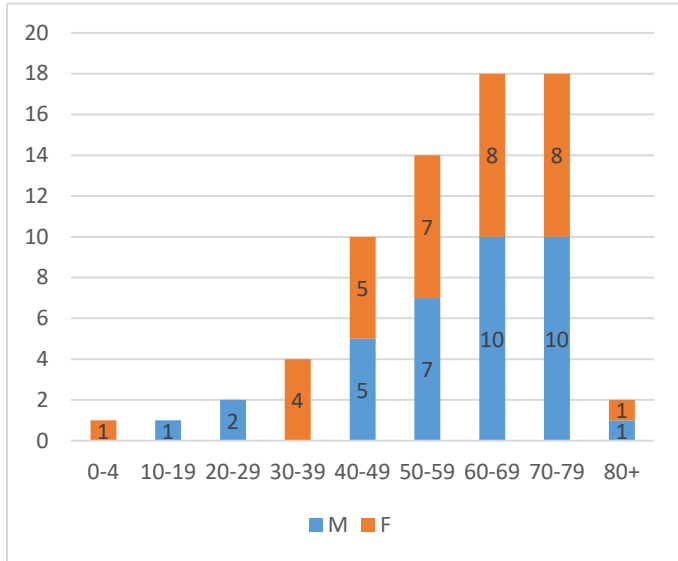




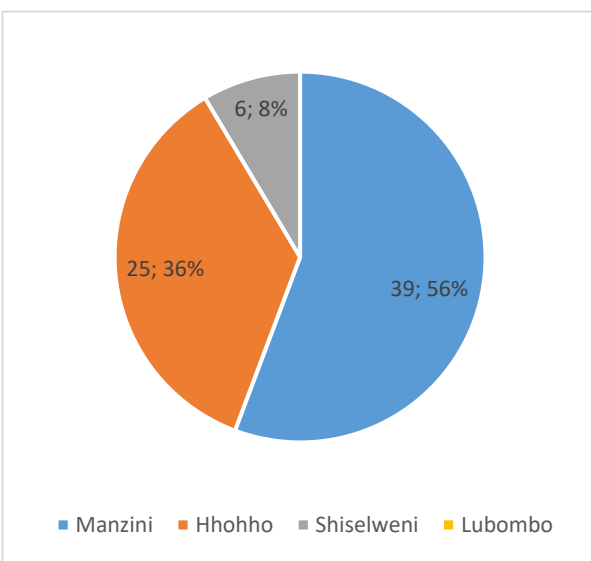
KINGDOM OF ESWATINI MINISTRY OF HEALTH



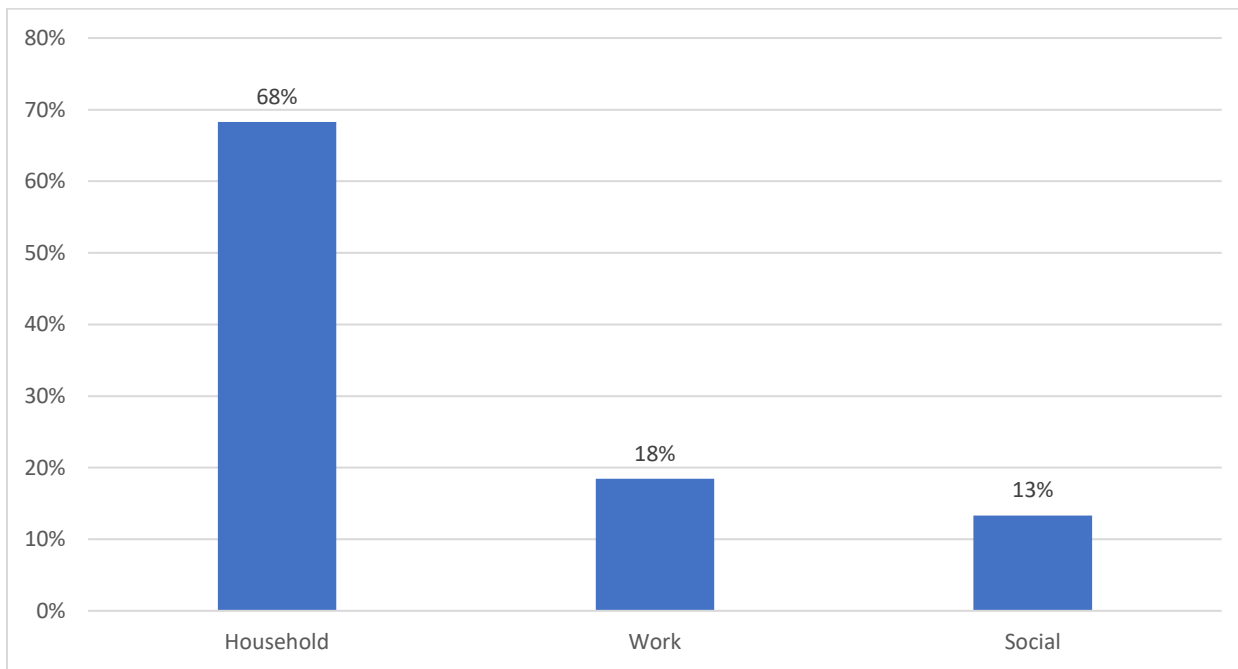
Deaths by age and gender



Deaths by region



Percentage of COVID-19 contacts by contact type

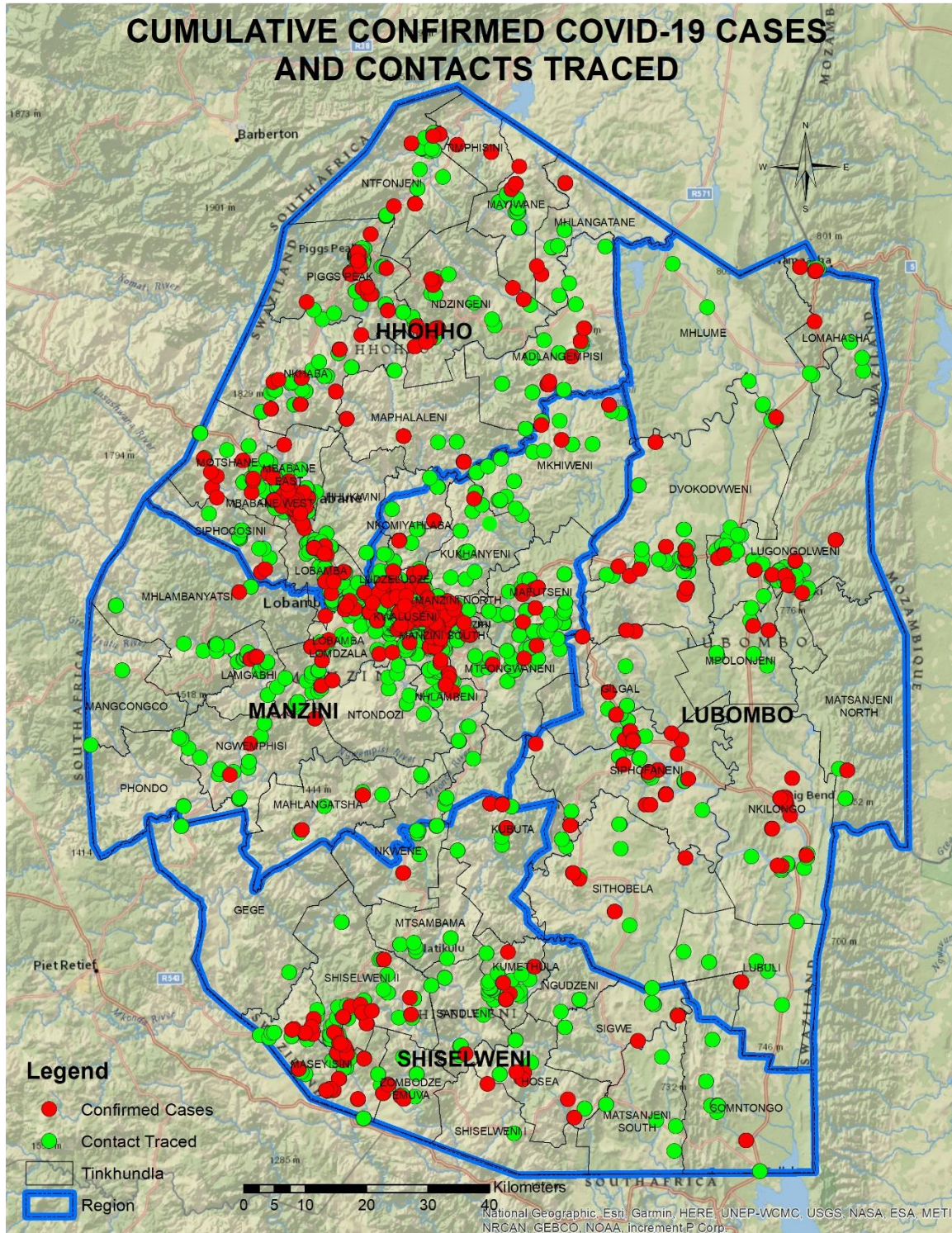




KINGDOM OF ESWATINI MINISTRY OF HEALTH



Distribution of new confirmed cases and contact tracing from 1st July to 11 August 2020





KINGDOM OF ESWATINI MINISTRY OF HEALTH



Technical Areas	Variable	No
Contact tracing	Cumulative No. of contacts followed up	7209
	Total No. of contacts followed in the last 24 hours	35
	Total No. of high-risk contacts	4908
	Total No. of symptomatic contacts	900
RRTs Screening	Cumulative No. screened	22266
	Total No. screened in the last 24 hours	898
	Total No. screened with at least one comorbidity	773
ACFs screening	Cumulative screening	59281
Alerts	Cumulative No. of alerts received	3799
	Total No. of alerts received in the last 24 hours	42
	Number of travelers screened at points of entry	221
Laboratory Testing	Laboratory tests done in last 24 hours	510
	No of positive tests in last 24 hours (%)	94 (18%)
Case Management	Total Active cases	1407
	Registration for care	94

NB: Note that screening data only covers those done by Rapid Response Teams (RRTs) and TB Active Case Finders (ACFs).

PUBLIC HEALTH/ RESPONSE INTERVENTIONS

COORDINATION AND LOGISTICS

- The country has adopted an incident management approach for responding to emergencies that established the incident management team that meets on a daily basis at the PHEOC.
- The IMT comprises multidisciplinary health experts including WHO and the IMT reviews on a daily basis the COVID-19 status, response and adjust and guides implementation as per the need.
- The ministry repurposed a team to coordinate trainings for all health care workers and trainings are ongoing.
- There has been a change in the COVID-19 response guidelines which has implications on testing, contact tracing and case management.

SURVEILLANCE

- COVID -19 screening is ongoing in all health facilities to identify suspect cases.
- Contact tracing by RRTs is ongoing in all regions.
- There has been a 25% increase in the number of new cases in the past 24 hrs.
- It is worth noting that most callers in the alert system are requesting to be tested while others required ambulance services.
- The door to door campaign in the Manzini region has yielded positives cases. Case finding is ongoing as there is currently intensified screening.
- The door to door campaign has also been launched in the Hhohho region to focus on hotspots.
- The RRTs coordinating team has completed regional refresher trainings to update RRTs on latest guidelines.



KINGDOM OF ESWATINI MINISTRY OF HEALTH



POINTS OF ENTRY

- Monitoring of travelers at points of entry is ongoing and a total of 221 travelers were registered and this shows an increase in number of travelers compared to the previous day.
- All returning residents are quarantined using two strategies (institutional and self-quarantine).

IPC and CASE MANAGEMENT

- Rapid compliance assessment on IPC for health facilities is ongoing.
- Training of health care workers on IPC is ongoing.
- There was 1 new death reported in the last 24hrs hence to date there are 70 deaths. The overall case fatality rate is 1.8%, with the Manzini region having the highest case fatality rate of 2.3%.

LABORATORY

- Laboratory testing for COVID-19 is ongoing at the National Reference Laboratory.
- It is also worth noting that the number of tests conducted per day has increased over the past days.
- The overall positivity rate in the past 24 hrs slightly declined from 19% to 18%.

RISK COMMUNICATION, COMMUNITY ENGAGEMENT & SOCIAL MOBILISATION

- Mobilization for risk communication activities in the Manzini Region is ongoing.
- The door to door team in the Manzini and Hhohho regions is ongoing.
- Development of jingles on men's health in relation to COVID-19 are being developed.

SOURCE OF INFORMATION:

- WHO COVID-19 situation reports
- Eswatini Public Health Emergency Operations Center (PHEOC)
- COVID-19 preparedness and response plan
- Regional and National Public Health Emergency Management Committees (PHEMC)

This report can also be found on the government website on <http://www.gov.sz/index.php>

Information Controls	<ul style="list-style-type: none"> ▪ Senior Medical Officer Public Health ▪ COVID-19 Task Force
Submitter's Details:	<p>Mr. Nhlanhla Nhlabatsi, Epidemiologist, MOH EDCU Tel: +268-24047436 Email: epidemiologymoh@gmail.com</p>